



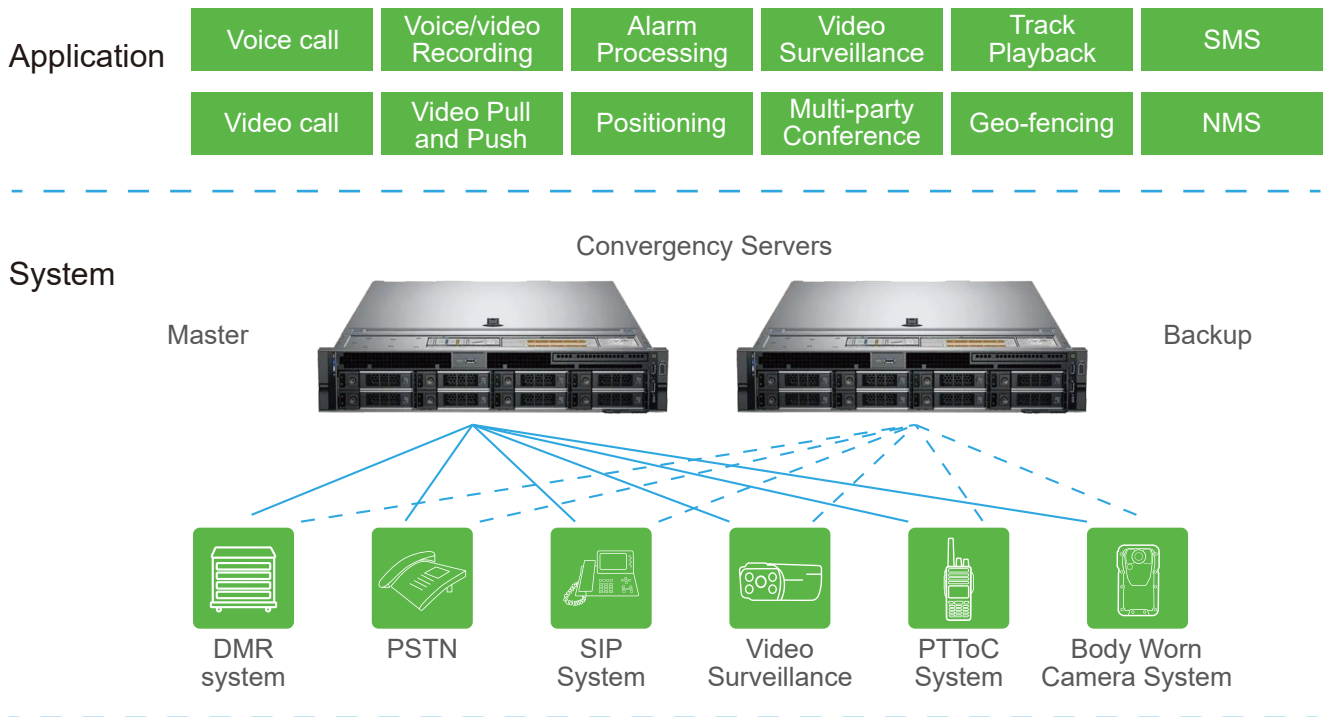
K Net

Converged Communication Platform

The K Net is a converged communication system that integrates private radio communication, public telecom network, and video system to realize voice, video and data interconnection and unified dispatching between multi-standard network terminals for various application scenarios such as public safety, emergency response, oil & gas, mining, electric power, transportation etc.



System Architecture



Key Features

- Interoperability of various Systems**

Based on advanced wireless communication, cloud computing and software switching technologies, the system provides interoperability between DMR systems, PTTToC systems, body cameras, CCTV, PSTN, internal PBX, Sip phones, etc.
- Unified Dispatching**

It has rich functions such as individual call, group call, group allocation, all call, broadcast call, priority call, emergency call, conference call, monitoring, etc., which can realize unified dispatching among different systems.
- Full-featured Network Management**

The system has enhanced network management functions such as terminals management, groups management, records management, extension management, systems management, system monitoring, system topology display.
- Modular and Flexible**

The K Net adopts modular design, so you only buy the features you need. It can be tailored to individual needs to ensure optimal performance across a variety of industries. It also easily scales from small to large systems and grows with your business.
- Security and Reliable Architecture**

The system adopts microservices and redundant architecture, supports smooth upgrades and expansion, multi-level platform interconnection and end-to-end encryption to ensure reliable and secure communications.
- Customizable Interface Layout**

Dispatch console adopts adjustable UI design, dispatcher can adjust the interface layout based on personal operating habits. Dispatch software adopts modular design to support split screens.

Systems

Unified Dispatching Console

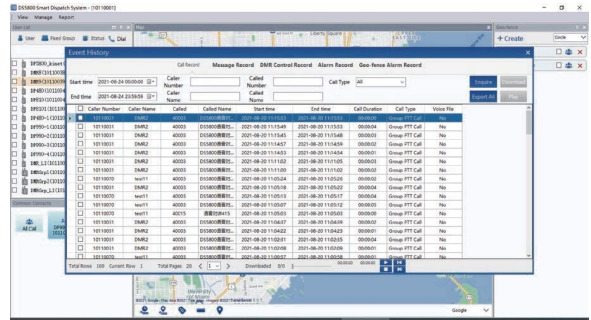
• Voice Dispatch Functions

Supports individual call, group call, broadcast call, priority call, and emergency call etc..



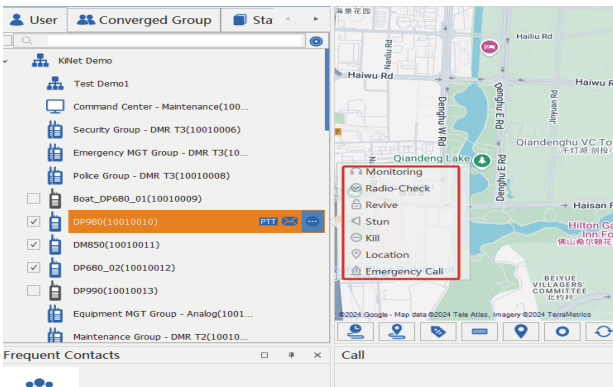
• Recording and Playback Functions

All voice calls, video call, surveillance videos, texts, statuses, and MMS are recorded and saved on the server, and the dispatcher can play or download the recording files.



• Terminals Status Monitoring and Control

Supports displaying the online/offline status of the terminals, and radios control such as call interruption, call overriding, call listening, call forwarding, kill, stun, revive.



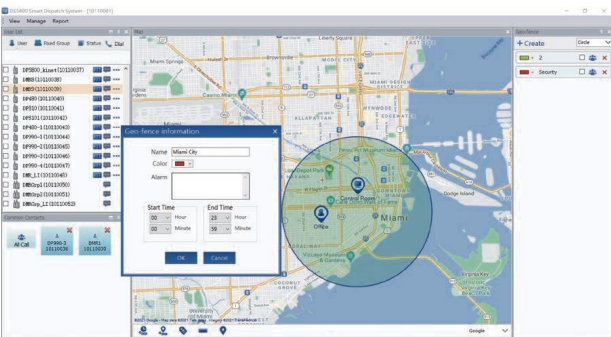
• Video Dispatch Functions

Supports individual video calls, group video calls, video push/pull, multimedia conferencing, and real-time CCTV video playback in separate multiwindows.



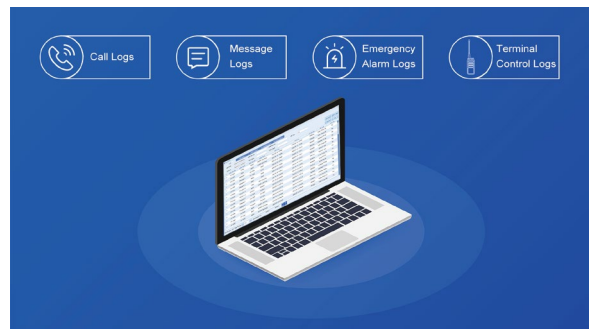
• Map-based Dispatch

Supports real-time tracking, and playback the historical track, and supports the electronic fence function, specifies the activity range of the on-duty personnel, and automatically alarms when crossing the electronic fence.



• Comprehensive Logs Management

All the logs of calls, message, emergency, and terminal control can be exported as reports.



Network Management System

- **Terminals Management**

Add or delete terminals such as DMR radios, Repeaters, PTTToC radios, IP cameras, Drones, Dispatchers, and PSTN, SIP phone.

- **Records Management**

All Detail Records (CDRs) are detailed information on the calls. The information contains source, destination, duration, and other useful call details.

- **System Topology Display**

Display the system topology and the location of base stations on the map real time.

- **Groups Management**

Add or delete groups such as DMR Tier 2 groups, DMR Tier 3 groups, PTTToC groups, covered groups.

- **System Management**

Add or edit sub-account, enterprise information, departments, and the system version information query.

- **System Monitoring**

Monitor the status of network equipment such as base stations, repeaters, control switching centers, links, etc. to simplify your system maintenance.

Computer Hardware / Operating Systems

Dispatch Client PC

| | |
|------------------|-------------------------|
| Operating System | Windows10 or above |
| Memory | ≥ 8GB |
| CPU | 2-core Core i5 or above |
| Hard disk | ≥500GB |

System Server(master/standby)

| | |
|------------------|-------------------------|
| Operating System | Windows10 or above |
| Memory | ≥ 16GB |
| CPU | 6-core Core i5 or above |
| Hard disk | ≥1TB |

Applications



Mining



Transportation



Sports Events



Public Safety



Electric Power



Oil & Gas



K-System Technologies Limited

Address: ROOM13,27/F, HO KING COMMERCIAL CENTRE, 2-16 FA YUEN STREET, MONGKOK, KOWLOON, HONG KONG | Email: info@kssystem.hk